

Neverfail for SQL Server

is the most comprehensive high availability,
low cost software solution for Microsoft SQL Server.



From the Rolodex to the PDA, the filing cabinet to the database server, the drive in business has always been to store, access and share data more efficiently and cost effectively. Once an innovation, the database and management of its data is now a business necessity. How much would it cost your company in lost productivity, sales and revenue to go a day without Microsoft® SQL Server? With Neverfail for SQL Server, you'll never have to know.

The heart and soul of Neverfail for SQL Server – Neverfail Heartbeat

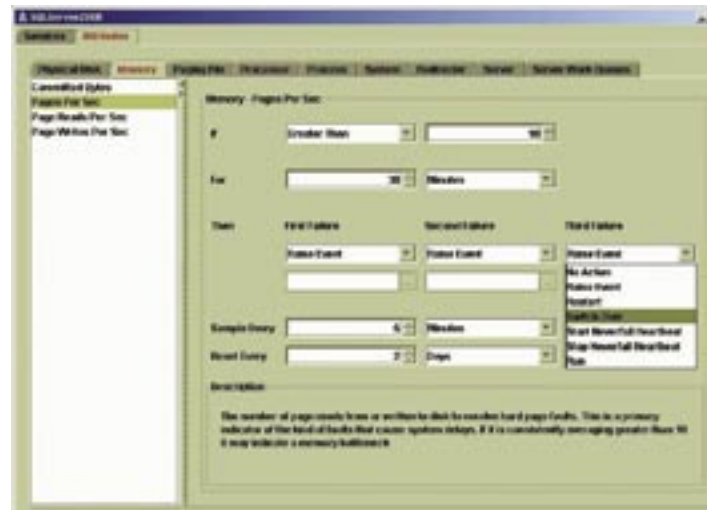
The most important consideration in protecting your Microsoft SQL Server environment is creating a real-time, duplicate copy of your SQL data. Neverfail Heartbeat sits at the core of Neverfail's suite of affordable, "cluster-class" solutions, replicating data from your active to your passive server, whether they reside in the same server room, or across the globe.

Neverfail for SQL Server is the only high availability solution that proactively monitors your entire SQL environment

With new databases being created, data being appended, changed, deleted and more, SQL Server environments never stand still— they're subject to constant change. Neverfail for SQL Server proactively monitors your SQL Server application, including all system and data tables, looking for just such changes. It then reconfigures itself accordingly to ensure any and all changes are included in its replication set.

In addition to monitoring the SQL application, Neverfail for SQL Server is the only cluster-class, high availability solution to proactively monitor the health of your entire SQL environment, including: physical server hardware, network infrastructure and operating system. If any problem occurs, Neverfail can take a variety of preemptive, corrective actions without resorting to a full system failover. In extreme cases, a graceful switchover to your secondary server can occur automatically, ensuring continuous SQL availability.

Neverfail can also protect auxiliary applications that you may have installed onto your server. These may include supporting applications such as anti-virus, backup and archiving solutions. Our Application Module eXtension (AMX) technology provides an application program interface to easily and rapidly generate these extension products.



Neverfail for SQL Server monitors SQL system performance, and can take preemptive action when performance degrades.

Neverfail's existing library of AMXs is extensive; they are fully maintained and supported and remove the commercial concern and cost of "one-off" development practices on a critical server.

You'll only find switchback capabilities in Neverfail for SQL Server

In addition to offering both manual and automatic switchover capabilities, Neverfail for SQL Server also features the ability to seamlessly switchback, something replication solutions can't offer. Whether your primary server is down for several hours or even days, Neverfail will seamlessly resynchronize your servers when the primary does come back online, and allow you to switch your workload back to a normal production state within a few minutes by the simple click of a button!



Life IT Limited
2 The Grange
Altrincham Road
Wilmslow
Manchester
Cheshire
SK9 5ND
t: 01625 548111
f: 01625 548112
www.lifeit.co.uk
sales@lifeit.co.uk





High availability over a LAN or WAN environment

Neverfail for SQL Server can be configured to protect your database applications in either a LAN or WAN environment. Where bandwidth or network utilization is an issue or needs to be reduced, the Neverfail Low Bandwidth Module (LBM) is available to optimize and reduce the amount of data that is transmitted between the two servers.

Reliability is the first and most crucial step to achieving high availability

The successful implementation and ongoing performance of any cluster-class high availability solution is predicated upon a reliable technology platform. Neverfail's Server Check Optimization Performance Evaluation (SCOPE) is the only automated software solution to deliver a comprehensive health "check-up" of your server environment. SCOPE identifies existing configuration and performance issues in your environment prior to installation of a high availability solution and it provides "snapshots" of your environment to ensure on-going reliability.

KEY FEATURES

Dynamically identifies and includes specific application components

- Neverfail for SQL Server intelligently discovers all application files, registry settings, services and databases associated with a specific application.
- Saves time, money and lowers risk by eliminating any customization or scripting required to support specific applications. Neverfail supports the SQL Server application straight "out of the box."

Automatically monitors all key application services

- Automatically monitors the availability of all key services associated with a specific application.
- Improves availability by showing not only whether a server is available or not, but what is happening within the application.

Monitors all key application performance attributes

- Monitors all key performance aspects of the operating system, hardware and application.
- Improves availability by identifying when overall performance begins to degrade.

Preemptive failover avoidance

- Neverfail can take a variety of corrective actions to repair or resolve problems detected through its monitoring capability.
- Avoids expense of IT personnel involvement in managing unnecessary failovers.

Seamless switchover, failover and switchback of application workload

- Automatically moves an application's workload back and forth between primary and secondary servers.
- Improves availability by providing seamless, non-disruptive application redundancy to users.

For more information, contact :

Neverfail for SQL Server Summary

Your databases are the lifeblood of your business and are too important to leave to back-up or replication. And why settle for a partial solution that focuses only on recovering hardware and data failures from a primary server when Neverfail for SQL Server can deliver comprehensive, proactive failure protection for all elements of your server environment? Only Neverfail for SQL Server can give you a cluster-class, high availability solution that's easy to install and approximately one-tenth the cost of other cluster-class solutions.

SYSTEM REQUIREMENTS:

Primary server requirements

- Microsoft Windows 2000 or 2003 compatible server with 2GB of free system hard disk space. This should not be spread over several drives.
- A minimum of 1GB RAM is recommended. Exact requirements depend on application load.
- Microsoft Windows 2000 Server or Advanced Server latest SP version, or Microsoft Windows 2003.
- Microsoft SQL Server 2000 Standard or Enterprise latest SP version.

Secondary server requirements

- Windows 2000 or 2003 compatible server with disk space and memory to match the Primary Server. Microsoft Windows 2000 or 2003 operating system with the same Service Pack applied as the Primary Server and same version of SQL Server with the same Service Pack applied as the Primary Server.

Network requirements

- 2 Network cards per machine (1 Public & 1 Channel) or 3 Network cards per machine (1 Public & 2 Channel).

Licensing

- Neverfail for SQL Server is licensed based on the Server in a pair with the greatest number of CPU's.

life@

t: 01625 548111
f: 01625 548112
www.lifeit.co.uk
sales@lifeit.co.uk

neverfail™

t. +44 (0) 870 777 1500
email info@neverfailgroup.com
web www.neverfailgroup.com